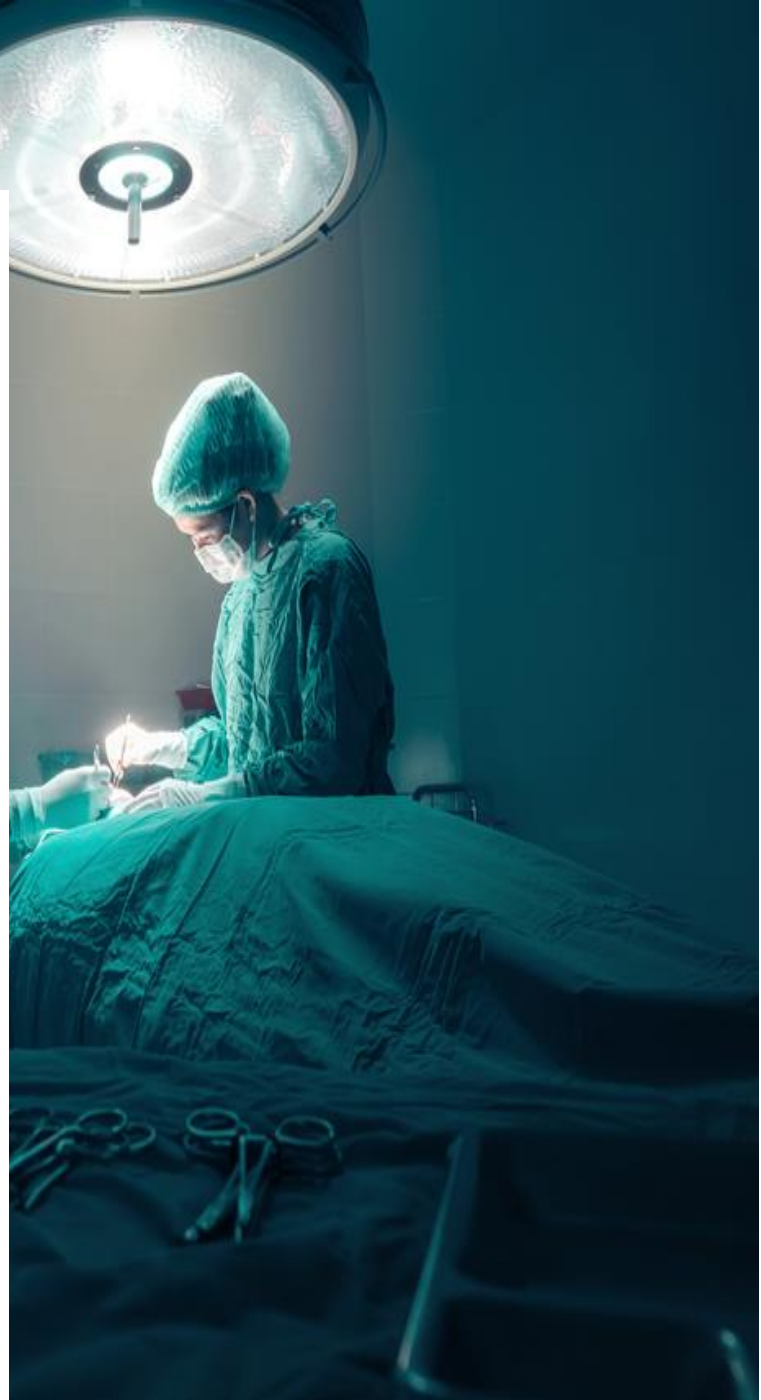


# Facility Planning & Audio-Visual Technology for Healthcare

---



# Facility Planning & Audio-Visual Technology for Health Care

Who should be involved in the initial stages of the simulation facility planning? Consider the following participants from which to select representatives:

Anticipating a move into a new healthcare simulation center is an exciting time for program directors and educators. At the same time, it is also riddled with many decisions, unanswered questions and unknown factors. Where does one start? For most, this will be the first-time program leadership and stakeholders have ever engaged in such a project.



## PHASE 1

### Establish a Simulation Facility Planning Team

In order to find the right solutions, decision-makers must first have a clear understanding of the scope of the project, how the center will be used and the various workflows that educators, staff and learner/participants will need. The beginning planning stage, building the planning team and the ongoing communication are the most important phases of the project.

“We don’t know what we don’t know” has never been truer than planning a simulation lab/center. The breadth of knowledge needed to complete the project successfully (success being defined by the building enabling program and curricular objectives to be achieved) goes far beyond any one person.



- Department or Division Director
- Clinical lab Manager
- Faculty/Educators (Sim Educators)
- Operations Staff
- Institutional Facility Management
- IT Department
  - Network Management
  - Server Management
  - Instructional Technology Managers & Specialists

### Simulation Technology & Facility Expert Consultants should have an understanding of:

- Practical hands-on experience with design, implementation and testing of systems.
- Simulation education best practices
- Practical operational best practices
- How the various simulation technology systems interconnect and function.
- How to design interface systems that make control of the AV systems easy and reliable.